



# PRODUCT CHANGE NOTIFICATION

PCN No: PCN-1043

Issue Date: 06/28/2024

Parts Affected	Old Rev.	New Rev.
FLP25-1.0	C	D
FLP25-1.900	C	D
FLP25-1.950	C	D
FLP25-10.0	C	D
FLP25-12.0	C	D
FLP25-13.0	C	D
FLP25-13.5	C	D
FLP25-144.00	C	D
FLP25-16.0	C	D
FLP25-17.0	C	D
FLP25-2.0	C	D
FLP25-2.325	C	D
FLP25-2.375	C	D
FLP25-20.83	C	D
FLP25-3.315	C	D
FLP25-3.5	D	D
FLP25-3.735	C	D
FLP25-4.0	C	D
FLP25-4.5	C	D
FLP25-40.0	C	D
FLP25-5.0	C	D
FLP25-5.315	C	D
FLP25-6.0	C	D
FLP25-8.0	C	D
PM7-C2031-10.00	A	B
PM7-C2031-18.00	A	B

These changes have been reviewed and approved by Bivar management per Bivar Procedure: Engineering Change Order and Part Change Notification, SOP-040, SOP-ENG-045

Please contact Bivar Inc. at [www.bivar.com/contact](http://www.bivar.com/contact) or speak to a Bivar representative for any questions or support requirements within 30 days of issue date.

BV00-Q465 REV 92122



PRODUCT CHANGE NOTIFICATION

PCN No: PCN-1043

Issue Date: 06/28/2024

Parts Affected		Old Rev.	A	New Rev.	B
	PM7-C2031-2.00		A		B
	PM7-C2031-2.50		A		B
	PM7-C2031-20.00		A		B
	SMFLP25-1.00		C		D
	SMFLP25-10.0		C		D
	SMFLP25-12.0		C		D
	SMFLP25-16.0		C		D
	SMFLP25-2.5		C		D
	SMFLP25-3.0		C		D
	SMFLP25-3.5		C		D
	SMFLP25-4.0		C		D
	SMFLP25-5.0		C		D
	SMFLP25-5.5		C		D
	SMFLP25-6.0		C		D
	SMFLP25-60.0		C		D
	SMFLP25-7.0		C		D
	SMFLP25-8.0		C		D
	SMFLP25-8.5		C		D

**Change Will Affect:**

This change will affect the product specifications.

**Description of Change:**

The drawing views and dimensions of the assembly product have been adjusted due to the updated lens cap component used. (c.f. new dimension on the drawing)

**Effective Date of Change:** June 28, 2024

**Reason for Change:** The changes made to the lens cap were intended to enhance the product's performance and quality.

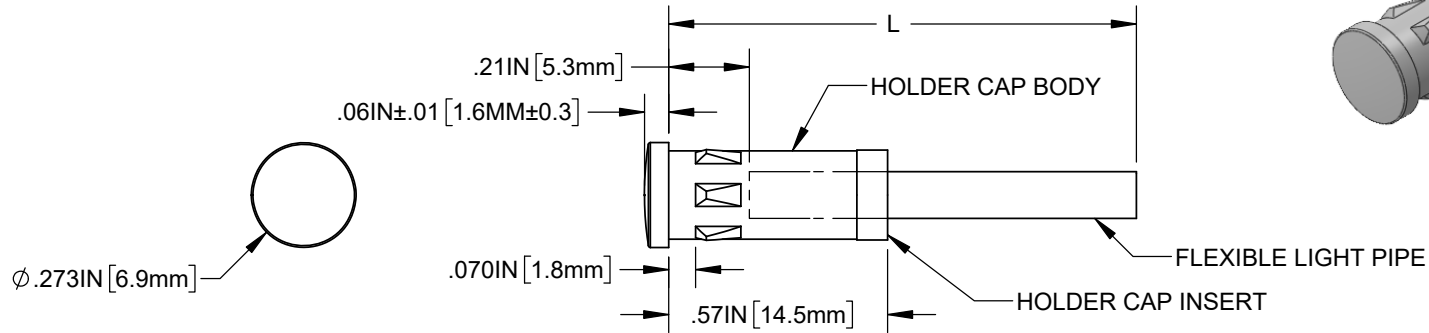
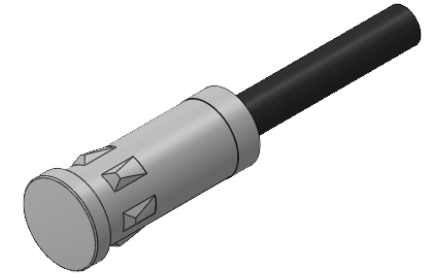
These changes have been reviewed and approved by Bivar management per Bivar Procedure: Engineering Change Order and Part Change Notification, SOP-040, SOP-ENG-045

Please contact Bivar Inc. at [www.bivar.com/contact](http://www.bivar.com/contact) or speak to a Bivar representative for any questions or support requirements within 30 days of issue date.

NOTES:

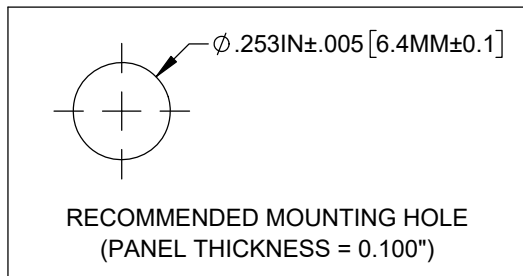
1. ALLOWABLE CUT LENGTH IN 0.25" INCREMENTS.

REVISIONS			
REV.	DESCRIPTION	DATE	APPROVED
A	ENGINEERING RELEASE	4/20/2012	T.Y.
B	ECO-1267: UPDATED COMPONENT DIMENSIONS	6/26/2024	A.V.



EXAMPLE:

PM7-C2031-6.50  
 SERIES | FIBER LENGTH IN 0.25" INCREMENTS



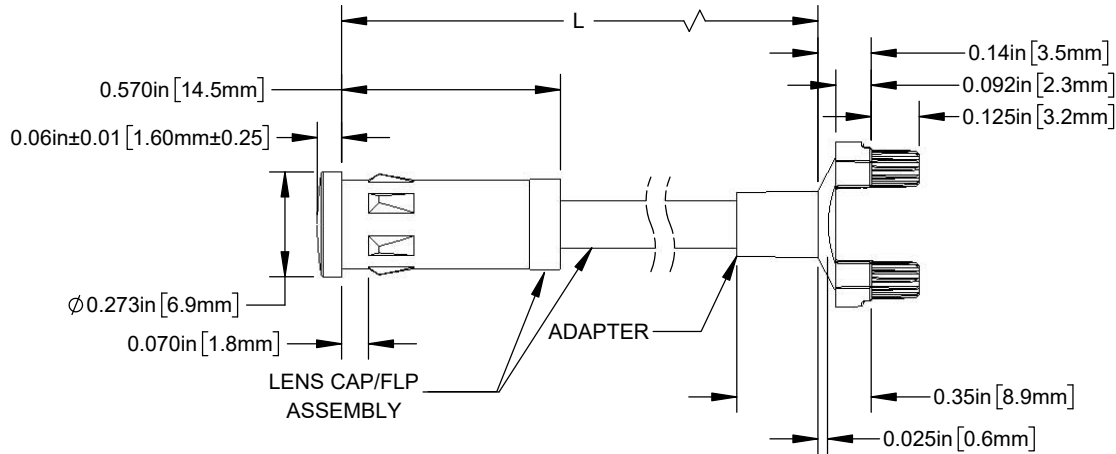
LENGTH (L)	TOLERANCE
2.50" ~ 16.00"	±0.05"
16.25" ~ 40.00"	±0.15"
40.25" ~ 80.00"	±0.30"
80.25" ~ 3,940.0"	±0.5%

**CUSTOMER USE DRAWING**

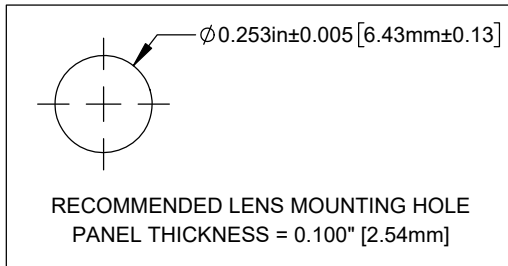
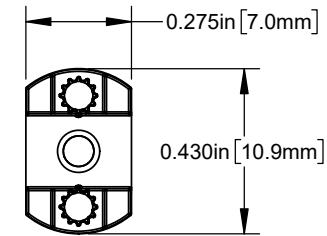
STANDARD TOLERANCE (UNLESS OTHERWISE SPECIFIED)		 4 THOMAS, IRVINE, CA. 92618 TEL: (949) 951-8808 FAX: (949) 951-3974	
DECIMALS	ANGULAR		
.X ± .1	X° ± 1°	TITLE: 7mm Circular Lens Flexible Light Pipe FLPS2031 Indicators DRAWING NO: PM7-C2301-XX.XX REVISION: B	
.XX ± .02			
.XXX ± .010			
DESIGNED: T. YIN	DATE: 4/20/2012	SHEET SIZE: A	CAGE CODE: 32559
REVISD: K. BARON	DATE: 6/26/2024	SCALE: 2:1	SHEET # 1 OF 1
CHECKED: D. ASHBY	DATE: 6/26/2024	CAD GENERATED DOCUMENT, DO NOT MEASURE DRAWING	

NOTES:

1. COMPONENTS SHIPPED NON-ASSEMBLED.

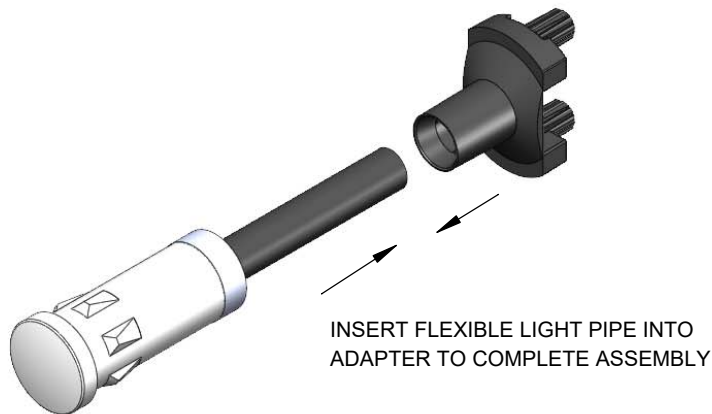
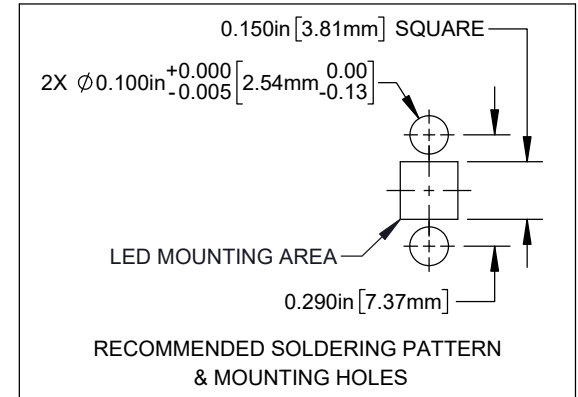


REVISIONS			
REV.	DESCRIPTION	DATE	APPROVED
A	Engineering Release	9/14/2009	T.Y.
B	Updated Table For Length "L"	11/14/2012	T.Y.
C	ECO-1241: Updated Recommended Mounting Holes	4/24/2024	A.V.
D	ECO-1267: Updated Component Dimensions	6/26/2024	A.V.



LENGTH (L)*	TOLERANCE
1.00" - 16.00"	±0.05"
16.1" - 40.00"	±0.15"
40.1" - 80.00"	±0.30"
80.1" - 3,940.00"	±0.5%

\*AVAILABLE IN 0.1" INCREMENTS



**CUSTOMER USE DRAWING**

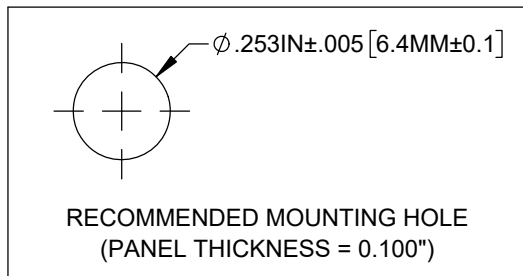
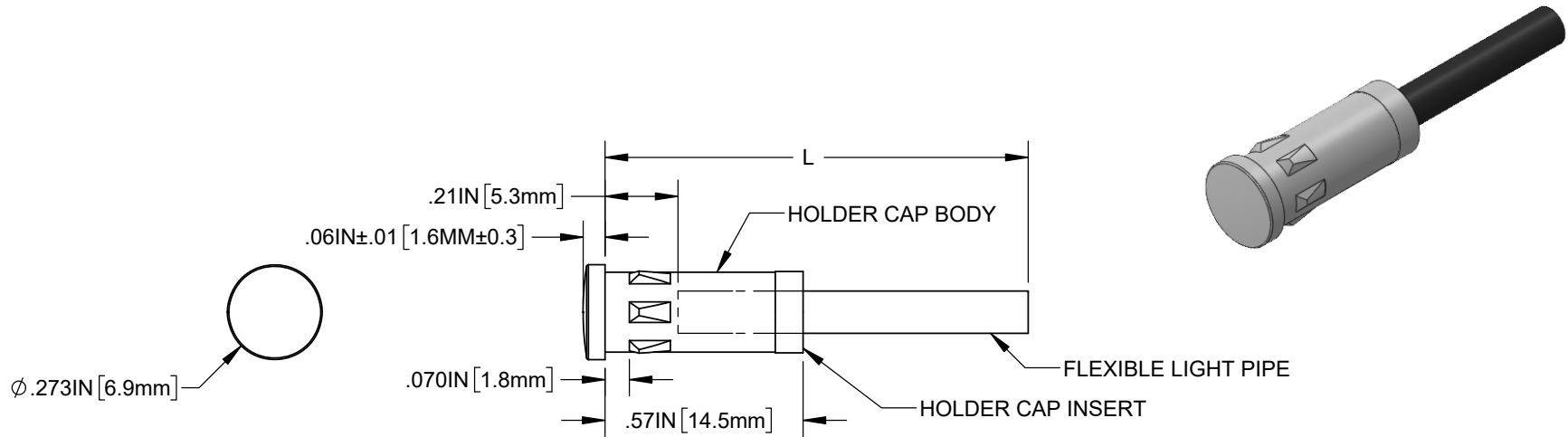
STANDARD TOLERANCE (UNLESS OTHERWISE SPECIFIED)		 4 THOMAS, IRVINE, CA. 92618 TEL: (949) 951-8808 FAX: (949) 951-3974			
DECIMALS	ANGULAR				
.X ± .1	X° ± 1°	TITLE: FLP ASSEMBLY WITH SMFLP ADAPTER, FLP25			
.XX ± .02					
.XXX ± .010		DESIGNED: B. OLIVER	DATE: 9/14/2009	DRAWING NO: SMFLP25-X.X	REVISION: D
		REVISOR: K. BARON	DATE: 6/26/2024	SHEET SIZE: A	CAGE CODE: 32559
		CHECKED: D. ASHBY	DATE: 6/26/2024	SCALE: 2:1	SHEET # 1 OF 1

CAD GENERATED DOCUMENT, DO NOT MEASURE DRAWING

NOTES:

1. ALLOWABLE CUT LENGTH IS UP TO 3 DECIMAL PLACES.

REVISIONS			
REV.	DESCRIPTION	DATE	APPROVED
A	ENGINEERING RELEASE	9/14/2009	T.Y.
B	UPDATED FIBER IN BOM	11/16/2012	T.Y.
C	ECO-1219: UPDATED LENS DIMENSIONS	8/22/2023	A.V.
D	ECO-1267: UPDATED COMPONENT DIMENSIONS	6/26/2024	A.V.



LENGTH (L)	TOLERANCE
0.750" ~ 16.000"	±0.050"
16.001" ~ 40.000"	±0.150"
40.001" ~ 80.000"	±0.300"
80.001" ~ 3,940.0"	±0.5%

**CUSTOMER USE DRAWING**

STANDARD TOLERANCE (UNLESS OTHERWISE SPECIFIED)		 4 THOMAS, IRVINE, CA. 92618 TEL: (949) 951-8808 FAX: (949) 951-3974	
DECIMALS	ANGULAR		
.X ± .1	X° ± 1°	TITLE: LENS CAP/FLP ASSEMBLY 7MM ROUND	
.XX ± .02			
.XXX ± .010			
DESIGNED: B. OLIVER	DATE: 9/14/2009	DRAWING NO: FLP25-XX.X	REVISION: D
REVISED: K. BARON	DATE: 6/26/2024	SHEET SIZE A	CAGE CODE: 32559
CHECKED: D. ASHBY	DATE: 6/26/2024	SCALE: 2:1	SHEET # 1 OF 1
CAD GENERATED DOCUMENT, DO NOT MEASURE DRAWING			