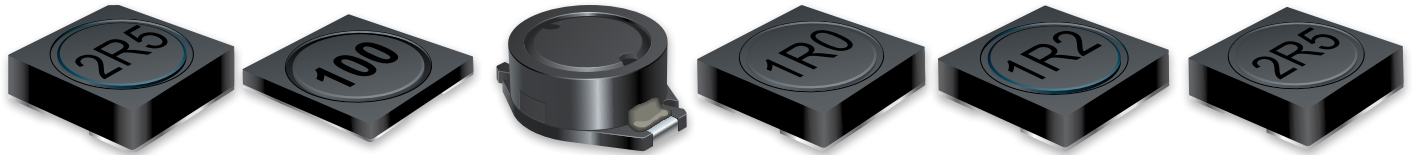


# PRODUCT CHANGE NOTIFICATION

## MAGNETICS



### Bourns® Model SRR1003, SRR3018, SRR4011, SRR4018, SRR5018, SRR6028, PM42S, PM518S, and PM628S Series Shielded Power Inductors *Relocation of Manufacturing Site and Manufacturing Process Change*

Riverside, California – July 27, 2023 – To accommodate increasing production demand, effective August 30, 2023, the manufacturing plant for the Model [SRR1003](#), SRR3018, [SRR4011](#), [SRR4018](#), [SRR5018](#), [SRR6028](#), [PM42S](#), [PM518S](#), and [PM628S](#) Series Shielded Power Inductors will be relocated to a higher capacity manufacturing facility.

Bourns will also change the marking, testing, and packing process from a manual process to an automated process for select models specified below. This process change should improve production efficiency, product quality, and reliability.

Lists of the affected part numbers for the manufacturing site relocation and each process change are included below.

Affected Part Numbers – Manufacturing Site Relocation				
PM42S-101-RC	SRR1003-100M	SRR4018-100Y	SRR5018-221Y	SRR6028-560Y
PM42S-151-RC	SRR1003-101M	SRR4018-101Y	SRR5018-270Y	SRR6028-5R0Y
PM42S-1R0-RC	SRR1003-120M	SRR4018-120Y	SRR5018-2R5Y	SRR6028-680Y
PM42S-220-RC	SRR1003-150M	SRR4018-121Y	SRR5018-330Y	SRR6028-681Y
PM42S-2R2-RC	SRR1003-151M	SRR4018-150Y	SRR5018-390Y	SRR6028-6R0Y
PM42S-330-RC	SRR1003-220M	SRR4018-151Y	SRR5018-3R0Y	SRR6028-7R3Y
PM42S-390-RC	SRR1003-270M	SRR4018-180Y	SRR5018-3R9Y	SRR6028-820Y
PM42S-470-RC	SRR1003-2R2M	SRR4018-181Y	SRR5018-470Y	SRR6028-8R6Y
PM42S-4R7-RC	SRR1003-330M	SRR4018-1R0Y	SRR5018-4R1Y	
PM518S-100-RC	SRR1003-3R0M	SRR4018-1R8Y	SRR5018-5R0Y	
PM518S-101-RC	SRR1003-470M	SRR4018-220Y	SRR5018-5R4Y	
PM518S-180-RC	SRR1003-471Y	SRR4018-270Y	SRR5018-680Y	
PM518S-220-RC	SRR1003-680M	SRR4018-2R2Y	SRR5018-6R2Y	
PM518S-4R1-RC	SRR1003-7R5M	SRR4018-2R7Y	SRR5018-7R5Y	
PM518S-5R4-RC	SRR3018-100Y	SRR4018-330Y	SRR5018-820Y	

Users should verify that the described changes will not impact the performance of the product in their specific applications.

IC23049

PM518S-6R2-RC	SRR3018-101Y	SRR4018-390Y	SRR5018-8R9Y
PM518S-8R9-RC	SRR3018-150Y	SRR4018-3R3Y	SRR5018-9R0Y
PM628S-100-RC	SRR3018-1R5Y	SRR4018-3R9Y	SRR6028-100Y
PM628S-101-RC	SRR3018-6R8Y	SRR4018-470Y	SRR6028-101Y
PM628S-120-RC	SRR4011-100YL	SRR4018-4R7Y	SRR6028-102Y
PM628S-150-RC	SRR4011-101YL	SRR4018-560Y	SRR6028-120Y
PM628S-180-RC	SRR4011-150YL	SRR4018-5R6Y	SRR6028-150Y
PM628S-220-RC	SRR4011-151YL	SRR4018-680Y	SRR6028-151Y
PM628S-270-RC	SRR4011-1R2YL	SRR4018-6R8Y	SRR6028-180Y
PM628S-330-RC	SRR4011-1R5YL	SRR4018-820Y	SRR6028-1R5Y
PM628S-390-RC	SRR4011-220YL	SRR4018-8R2Y	SRR6028-220Y
PM628S-3R0-RC	SRR4011-2R2YL	SRR5018-100Y	SRR6028-221Y
PM628S-3R9-RC	SRR4011-330YL	SRR5018-101Y	SRR6028-270Y
PM628S-470-RC	SRR4011-3R3YL	SRR5018-120Y	SRR6028-2R5Y
PM628S-560-RC	SRR4011-470YL	SRR5018-121Y	SRR6028-330Y
PM628S-5R0-RC	SRR4011-4R7YL	SRR5018-150Y	SRR6028-331Y
PM628S-680-RC	SRR4011-680YL	SRR5018-180Y	SRR6028-390Y
PM628S-6R0-RC	SRR4011-6R2YL	SRR5018-181Y	SRR6028-3R3Y
PM628S-7R3-RC	SRR4011-820YL	SRR5018-1R2Y	SRR6028-3R9Y
PM628S-820-RC	SRR4011-8R2YL	SRR5018-1R8Y	SRR6028-470Y
PM628S-8R6-RC	SRR4011-R47YL	SRR5018-220Y	SRR6028-471Y

### Affected Part Numbers – Marking Process Change

PM42S-101-RC	SRR3018-150Y	SRR4011-R47YL	SRR4018-470Y	SRR5018-270Y
PM42S-151-RC	SRR3018-1R5Y	SRR4018-100Y	SRR4018-4R7Y	SRR5018-2R5Y
PM42S-1R0-RC	SRR3018-6R8Y	SRR4018-101Y	SRR4018-560Y	SRR5018-330Y
PM42S-220-RC	SRR4011-100YL	SRR4018-120Y	SRR4018-5R6Y	SRR5018-390Y
PM42S-2R2-RC	SRR4011-101YL	SRR4018-121Y	SRR4018-680Y	SRR5018-3R0Y
PM42S-330-RC	SRR4011-150YL	SRR4018-150Y	SRR4018-6R8Y	SRR5018-3R9Y
PM42S-390-RC	SRR4011-151YL	SRR4018-151Y	SRR4018-820Y	SRR5018-470Y
PM42S-470-RC	SRR4011-1R2YL	SRR4018-180Y	SRR4018-8R2Y	SRR5018-4R1Y
PM42S-4R7-RC	SRR4011-1R5YL	SRR4018-181Y	SRR5018-100Y	SRR5018-5R0Y
PM518S-100-RC	SRR4011-220YL	SRR4018-1R0Y	SRR5018-101Y	SRR5018-5R4Y
PM518S-101-RC	SRR4011-2R2YL	SRR4018-1R8Y	SRR5018-120Y	SRR5018-680Y
PM518S-180-RC	SRR4011-330YL	SRR4018-220Y	SRR5018-121Y	SRR5018-6R2Y
PM518S-220-RC	SRR4011-3R3YL	SRR4018-270Y	SRR5018-150Y	SRR5018-7R5Y
PM518S-4R1-RC	SRR4011-470YL	SRR4018-2R2Y	SRR5018-180Y	SRR5018-820Y
PM518S-5R4-RC	SRR4011-4R7YL	SRR4018-2R7Y	SRR5018-181Y	SRR5018-8R9Y
PM518S-6R2-RC	SRR4011-680YL	SRR4018-330Y	SRR5018-1R2Y	SRR5018-9R0Y

PM518S-8R9-RC	SRR4011-6R2YL	SRR4018-390Y	SRR5018-1R8Y
SRR3018-100Y	SRR4011-820YL	SRR4018-3R3Y	SRR5018-220Y
SRR3018-101Y	SRR4011-8R2YL	SRR4018-3R9Y	SRR5018-221Y

**Affected Part Numbers – Testing and Packing Process Changes**

PM42S-101-RC	SRR1003-220M	SRR4011-330YL	SRR4018-2R7Y	SRR5018-220Y
PM42S-151-RC	SRR1003-270M	SRR4011-3R3YL	SRR4018-330Y	SRR5018-221Y
PM42S-1R0-RC	SRR1003-2R2M	SRR4011-470YL	SRR4018-390Y	SRR5018-270Y
PM42S-220-RC	SRR1003-330M	SRR4011-4R7YL	SRR4018-3R3Y	SRR5018-2R5Y
PM42S-2R2-RC	SRR1003-3R0M	SRR4011-680YL	SRR4018-3R9Y	SRR5018-330Y
PM42S-330-RC	SRR1003-470M	SRR4011-6R2YL	SRR4018-470Y	SRR5018-390Y
PM42S-390-RC	SRR1003-471Y	SRR4011-820YL	SRR4018-4R7Y	SRR5018-3R0Y
PM42S-470-RC	SRR1003-680M	SRR4011-8R2YL	SRR4018-560Y	SRR5018-3R9Y
PM42S-4R7-RC	SRR1003-7R5M	SRR4011-R47YL	SRR4018-5R6Y	SRR5018-470Y
PM518S-100-RC	SRR3018-100Y	SRR4018-100Y	SRR4018-680Y	SRR5018-4R1Y
PM518S-101-RC	SRR3018-101Y	SRR4018-101Y	SRR4018-6R8Y	SRR5018-5R0Y
PM518S-180-RC	SRR3018-150Y	SRR4018-120Y	SRR4018-820Y	SRR5018-5R4Y
PM518S-220-RC	SRR3018-1R5Y	SRR4018-121Y	SRR4018-8R2Y	SRR5018-680Y
PM518S-4R1-RC	SRR3018-6R8Y	SRR4018-150Y	SRR5018-100Y	SRR5018-6R2Y
PM518S-5R4-RC	SRR4011-100YL	SRR4018-151Y	SRR5018-101Y	SRR5018-7R5Y
PM518S-6R2-RC	SRR4011-101YL	SRR4018-180Y	SRR5018-120Y	SRR5018-820Y
PM518S-8R9-RC	SRR4011-150YL	SRR4018-181Y	SRR5018-121Y	SRR5018-8R9Y
SRR1003-100M	SRR4011-151YL	SRR4018-1R0Y	SRR5018-150Y	SRR5018-9R0Y
SRR1003-101M	SRR4011-1R2YL	SRR4018-1R8Y	SRR5018-180Y	
SRR1003-120M	SRR4011-1R5YL	SRR4018-220Y	SRR5018-181Y	
SRR1003-150M	SRR4011-220YL	SRR4018-270Y	SRR5018-1R2Y	
SRR1003-151M	SRR4011-2R2YL	SRR4018-2R2Y	SRR5018-1R8Y	



There will be no product design or material changes as a result of the manufacturing plant relocation. The inductors produced at the new manufacturing site will meet the same data sheet specifications as the inductors from the existing plant.

The fit, function, and country of origin of all of the affected part numbers will remain the same. The form of the selected models will change slightly due to the change in the marking process. The quality and reliability of the affected part numbers should be improved as a result of the process changes. Traceability will be maintained through lot code and date code.

Samples are available upon request. Bourns recommends that customers test the affected part numbers in their specific applications for verification of satisfactory performance.

**Implementation dates are as follows:**

Date that deliveries of products manufactured at both manufacturing sites will begin: **August 30, 2023**  
First date code using the above changes: **2335**

*If you have any questions or need additional information, please feel free to [contact Customer Service/Inside Sales](#).*