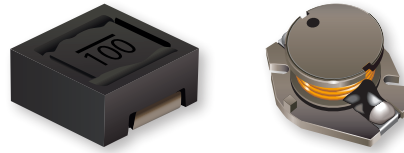




PRODUCT CHANGE NOTIFICATION

MAGNETICS



Select Bourns® Inductors

Manufacturing Site and Process Changes

Riverside, California - February 13, 2024 – In order to support our fast-growing demand and enhance continuity of supply, effective July 1, 2024, Bourns will change manufacturing sites for select inductors to facilities with higher production capacity, and add additional manufacturing sites for other inductors. Additionally, for some of the affected part numbers, the marking, testing and taping processes, which were a mix of semi-automatic and automatic processes, will be integrated into one automated line. Lists of affected part numbers, organized by type of change, is included below.

Affected Part Numbers – Manufacturing Site				
PT331-513AE	SRR1045-150M	SRR1045-680M	SRR1045-331M	SRR1045-152M
SRR1045-2R7Y	SRR1045-220M	SRR1045-101M	SRR1045-471M	SDR1005-470KL
SRR1045-4R7Y	SRR1045-330M	SRR1045-151M	SRR1045-681M	SDR1005-680KL
SRR1045-100M	SRR1045-470M	SRR1045-221M	SRR1045-102M	SDR1005-220ML

Affected Part Numbers – Manufacturing Site				
SRR3818A-1R0Y	SRR3818A-2R7Y	SRR3818A-4R7Y	SRR3818A-150M	SRR3818A-470M
SRR3818A-1R5Y	SRR3818A-3R3Y	SRR3818A-6R8Y	SRR3818A-220M	SRR3818A-680M
SRR3818A-2R2Y	SRR3818A-3R9Y	SRR3818A-100M	SRR3818A-330M	SRR3818A-101M

Affected Part Numbers – Marking, Testing, Taping Process		
SDR1005-470KL	SDR1005-680KL	SDR1005-220ML

There will be no product design or material changes as a result of the above changes. The inductors produced at the new/additional manufacturing sites will meet the same data sheet specifications as the inductors from the existing site.

The form, fit, function, quality, reliability, and country of origin of the affected part numbers will remain the same. Traceability will be maintained through lot code and date code.

Samples are available upon request. Bourns recommends that customers test the affected part numbers in their specific applications for verification of satisfactory performance.

Implementation dates are as follows:

Date that products manufactured at the existing location will cease: **June 30, 2024**

Date that deliveries of products manufactured at the relocated manufacturing sites will begin: **July 01, 2024**

First date code using the above changes: **2427**

If you have any questions or need additional information, please feel free to [contact Customer Service/Inside Sales](#).

Users should verify that the described changes will not impact the performance of the product in their specific applications.

IC24019