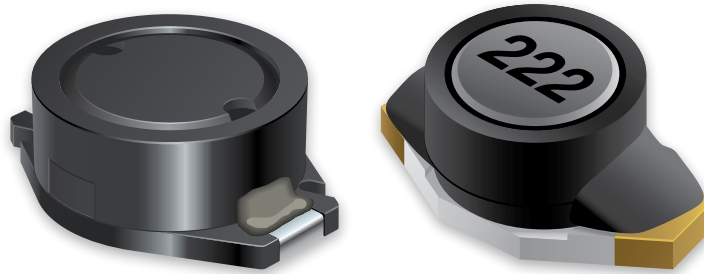


PRODUCT CHANGE NOTIFICATION

MAGNETICS



Bourns® Model PM1608S, SRE6603 and SRR6603 Series Shielded Power Inductors

Additional Source of Supply for Inductor Core

Riverside California – July 28, 2022 – In order to support our fast-growing demand, enhance continuity of supply and provide maximum flexibility to customers, effective January 22, 2023, Bourns will begin using an additional ferrite core material supplier for the Model [PM1608S](#), [SRE6603](#) and [SRR6603](#) Series Shielded Power Inductors. The additional supplier has been qualified and included in the Authorized Vendor List.

The material characteristics of the core from the additional supplier and the existing core are compared in the following table:

Core Characteristics	Existing Source	Additional Source
Initial Permeability	2800	3200
Saturation Flux Density (mT)	510	520
Curie Temperature (°C)	200	> 240

Users should verify that the described changes will not impact the performance of the product in their specific applications.

IC22093

The use of the core from the additional supplier will not change the data sheet specifications for the Model [PM1608S](#), [SRE6603](#) and [SRR6603](#) Series Shielded Power Inductors. The form, fit, function, quality and reliability of the inductor will not be affected by the core used. Traceability will be maintained through lot code and date code. A list of affected part numbers is included below.

Affected Part Numbers					
PM1608S-100M-RC	PM1608S-222M-RC	SRE6603-103M	SRR6603-103ML	SRR6603-221ML	SRR6603-471ML
PM1608S-101M-RC	PM1608S-2R2M-RC	SRE6603-152M	SRR6603-103MLH	SRR6603-222KL	SRR6603-472KL
PM1608S-102M-RC	PM1608S-332M-RC	SRE6603-222M	SRR6603-150ML	SRR6603-222ML	SRR6603-472ML
PM1608S-103M-RC	PM1608S-3R3M-RC	SRE6603-332M	SRR6603-151KL	SRR6603-2R2ML	SRR6603-4R7ML
PM1608S-150M-RC	PM1608S-472M-RC	SRE6603-472M	SRR6603-151ML	SRR6603-330ML	SRR6603-680ML
PM1608S-152M-RC	PM1608S-4R7M-RC	SRE6603-682M	SRR6603-152ML	SRR6603-331ML	SRR6603-681ML
PM1608S-1R5M-RC	PM1608S-681M-RC	SRR6603-100ML	SRR6603-1R0ML	SRR6603-332ML	SRR6603-682ML
PM1608S-220M-RC	PM1608S-682M-RC	SRR6603-101ML	SRR6603-1R5ML	SRR6603-3R3ML	SRR6603-6R8ML
PM1608S-221M-RC	PM1608S-6R8M-RC	SRR6603-102ML	SRR6603-220ML	SRR6603-470ML	

Samples built using cores from the additional inductor core supplier are available upon request. Bourns recommends that customers test the affected part number(s) made with the new core in their specific applications for verification of satisfactory performance.

Implementation dates are as follows:

Date that deliveries of products manufactured using cores from both sources will begin: **January 22, 2023**

First date code using cores from both sources: **2304**

If you have any questions or need additional information, please feel free to [contact Customer Service/Inside Sales](#).