

Carrier Tape Change for CLX6A-FKB, CLX6C-FKB, CLX6D-FKB, CLX6E-FKC, CLX6F-FKC & QLX6F-FKC LEDs

PCN-CM080

Announcement Date: April 15, 2016

Implementation Date: Immediately

This notification applies to the following Cree product series:

CLX6A-FKB-Cxxxxxxxx

CLX6C-FKB-Cxxxxxxxx

CLX6D-FKB-Cxxxxxxxx

CLX6E-FKC-Cxxxxxxxx

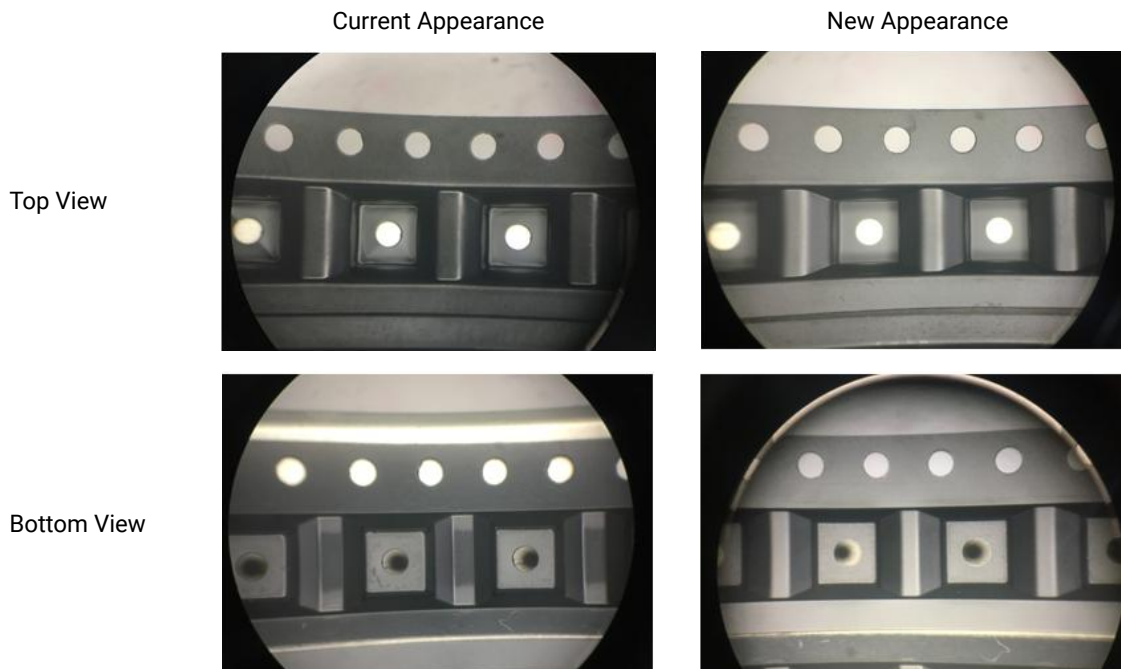
CLX6F-FKC-Cxxxxxxxx

QLX6F-FKC-Cxxxxxxxx

No customer action is required.

CHANGE DESCRIPTION

Cree will begin shipment of CLX6A-FKB, CLX6C-FKB, CLX6D-FKB, CLX6E-FKC, CLX6F-FKC and QLX6F-FKC LEDs with new carrier tape material. The tape dimensions have not changed. The current and new carrier tape are similar in appearance as shown below:



IMPACT OF CHANGE

Effective immediately, customers may begin receiving shipments of CLX6A-FKB, CLX6C-FKB, CLX6D-FKB, CLX6E-FKC, CLX6F-FKC and QLX6F-FKC LEDs with the new carrier tape.

No customer action is required.